

MONTHLY MEMBERSHIP PROGRESS REPORT

District 28 U

Results as of: 5/31/2024

GMT:

LOCATION UTAH

GMT CA

Clubs			
RESULTS FOR 2023-2024			
QUARTER	NEW CLUB GOAL	NEW CLUBS	DROPPED CLUBS
JULY/AUG/SEPT	0	0	0
OCT/NOV/DEC	1	0	3
JAN/FEB/MAR	0	0	0
APR/MAY/JUNE	0	0	0

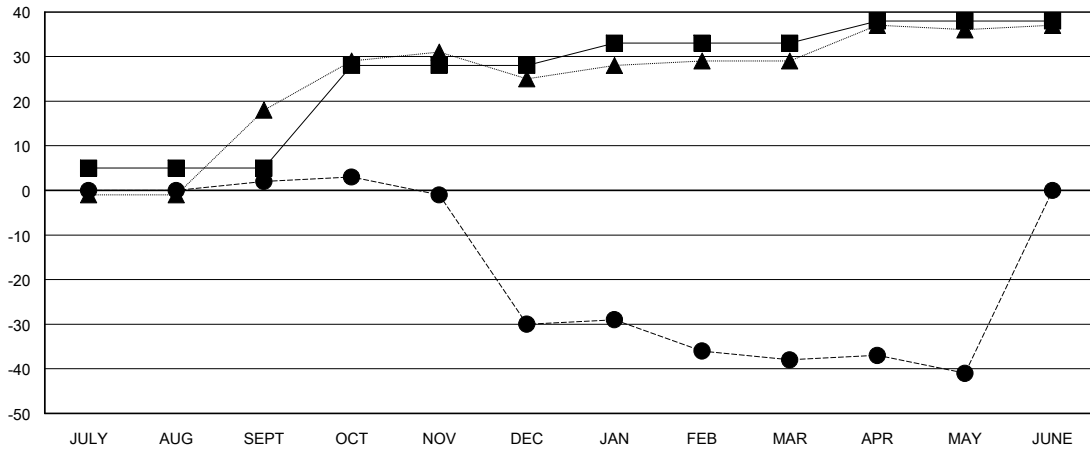
Members			
RESULTS FOR 2023-2024			
QUARTER	MEMBER GROWTH NET GOAL	MEMBER GROWTH ACTUAL	DROPPED MEMBERS ACTUAL (including transfers)
JULY/AUG/SEPT	5	17	10
OCT/NOV/DEC	23	10	40
JAN/FEB/MAR	5	5	13
APR/MAY/JUNE	5	4	7

GOALS AND ACTUAL NEW CLUBS CUMULATIVE



- - CURRENT YEAR GOALS FOR NEW CLUBS
- - CURRENT YEAR ACTUAL NEW CLUBS
- ▲ - LAST YEAR ACTUAL NEW CLUBS

GOALS AND ACTUAL MEMBERS CUMULATIVE



- - MEMBER GROWTH NET GOAL
- - MEMBER GROWTH ACTUAL
- ▲ - LAST YEAR MEMBERSHIP ACTUAL

DROPPED CLUBS: 3	10 CLUBS OF 27 ADDED 1 OR MORE NEW MEMBERS	GENDER DISTRIBUTION	
		MALE 294 (70.84%)	FEMALE 121 (29.16%)
DROPPED MEMBERS		CLICK HERE FOR CUMULATIVE MEMBERSHIP DATA	TOTAL FAMILY UNIT MEMBERS 75
DECEASED 6	CLUB CANCELLED 28		FAMILY MEMBERS PAYING HALF DUES 38
OTHER 36	TOTAL 70		